

CAUTION : Do NOT operate without following instructions. Programs or files in the instrument may be broken.

1. Connect mouse and keyboard to 4287A. Do not connect anything to LAN interface. Then turn the 4287A on.

2. Press [System] key on the 4287A front panel, and press {SERVICE MENU} {MISC MENU} {SHUTDOWN AS SERVICE} keys of softkey. Then Figure1 will be displayed.



Figure1

Type password and click OK. The 4287A shutdown automatically.

The password is three letters “kid”.

3. Pressing 4287A power line switch twice, turn the 4287A on. Figure2 will be displayed

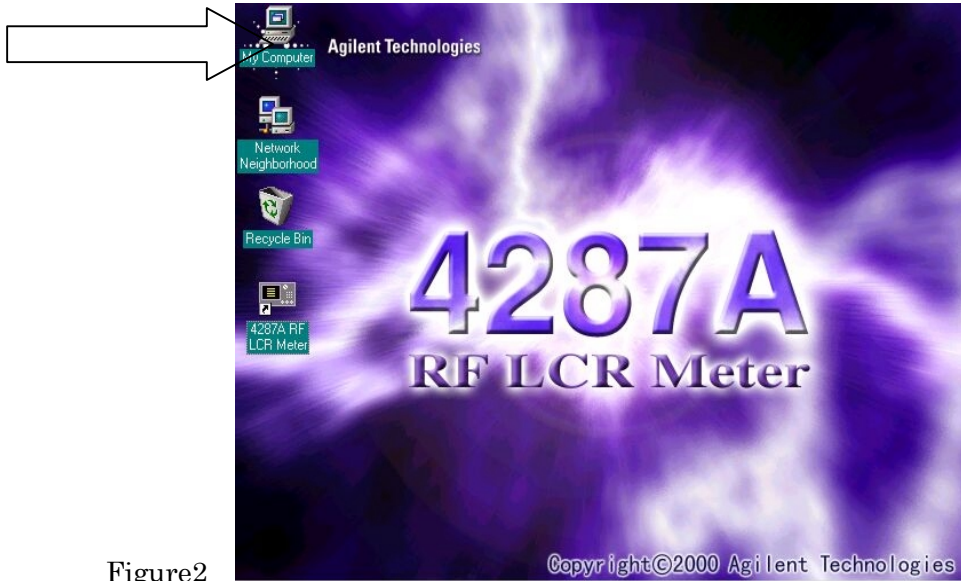


Figure2

Insert the disk1 of firmware disks into the 4287A FDD (floppy disk drive).

Double-click the “My Computer” icon on the top left corner of 4287A display.

4. Then double-click the “3 1/2 Floppy [A:]” icon, Figure3 will be displayed.



Figure3

5. Double-Click “Setup.exe” icon. Firmware installation will start automatically, and Figure4 will be displayed



Figure4

6. After the disk1 installation is finished, Figure5 will be displayed. Insert the disk2 into the FDD of 4287A, then click OK.

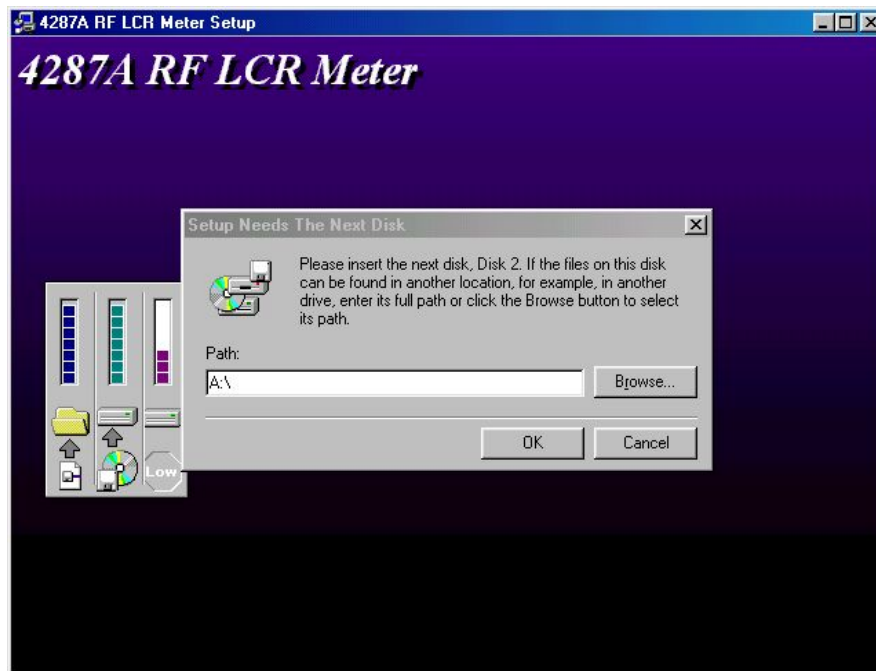


Figure5

7. After the disk2 installation is completed, Figure6 will be displayed. Insert disk3 into the FDD of 4287A, then click OK.



Figure6

8. After the disk3 installation is finished, 4287A will shutdown automatically.
9. Pressing 4287A power line switch twice, turn the 4287A on.
After the Figure7 is displayed, double-click the "4287A RF LCR Meter" icon.

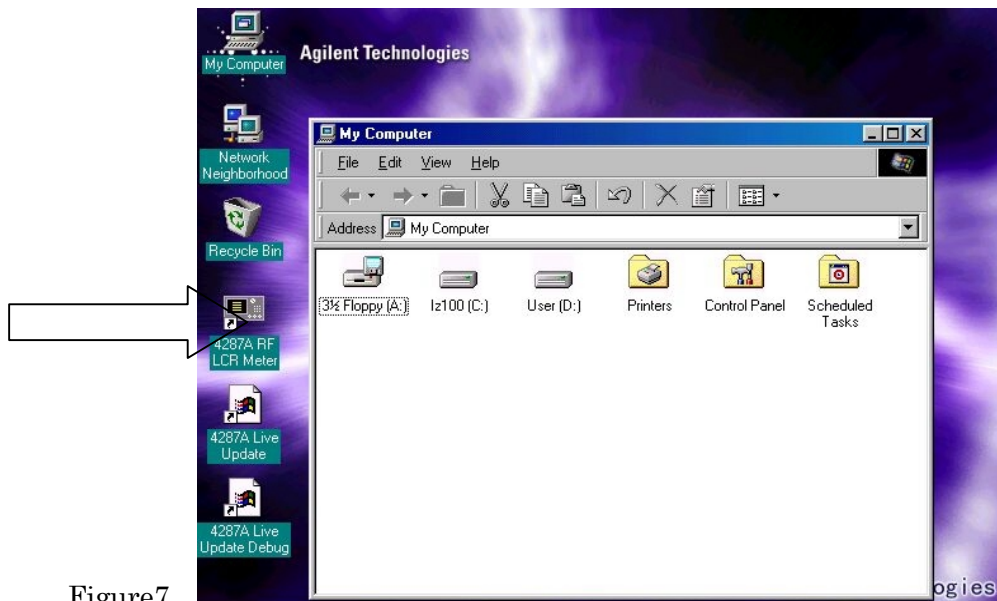


Figure7

10. Press [System] key of the 4287A front panel, and press {Help}{About 4287A}. Firmware revision will be displayed. Confirm the current revision of the firmware, and click OK.
11. Press [System] key of the 4287A front panel, and press {SERVICE MENU} {MISC MENU} {SHUTDOWN AS INSTR} softkeys. Figure8 will be displayed



Figure8

11. Type password, then click OK. 4287A will shutdown automatically.

Firmware update finished.